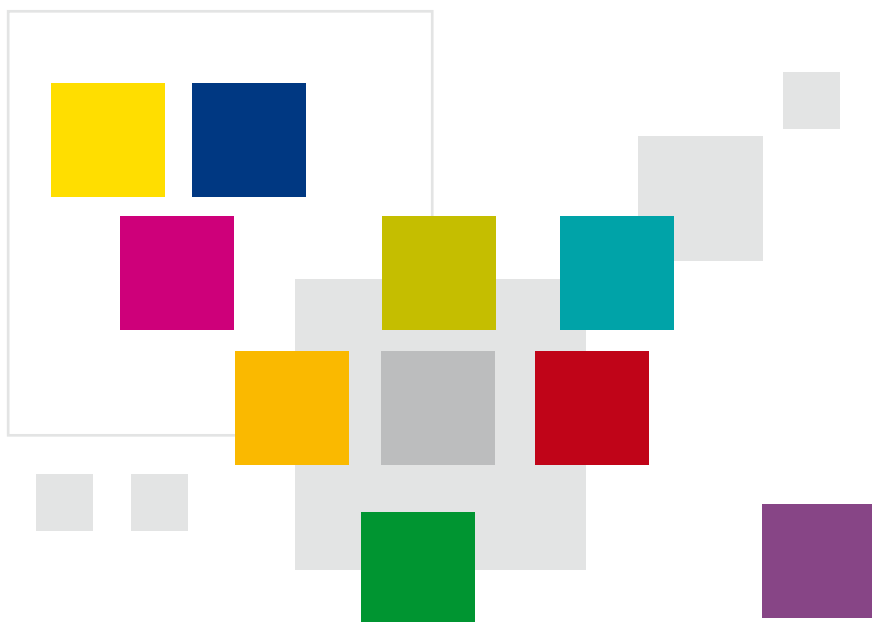


Annual Report 2010



Municipal Library of Prague



Text: Jan Vávra, Lenka Hanzlíková
Graphic design: Petra Hájková
© Municipal Library of Prague,
2011 www.mlp.cz

Library online

From approximately the middle of 2010, the library's online presentation has had two versions – the “old” and the “new”.

The old website at the address **www.mlp.cz** was maintained and developed throughout the year. New options of extending a library card online or checking data about the reader kept by the library in the user's online account were added.

However, primary attention was focused on preparing the new website. Transforming the library's website did not just involve cosmetic changes, but rather a **complete revision of the site**, including graphics, texts, catalogue searches and admission booking. The objective was to create a website that would serve as the main information channel about library services.

The following library departments participated in preparing these changes: communication, information technologies, cataloguing and the library fund methodology specialist. The following external entities collaborated on the project: Roman Šantora (project coordinator), Symbio Digital (proposal of the functional structure and graphics), Továrna.cz (editing system, coding and live launch of templates), Incad (searching the entire web based on FAST enterprise search), Perfect System (reservation system and online admission purchase).

In connection with transforming the catalogue, **scanning book covers** and loading them into the system was launched.

The first functional version of the site was tested by librarians from June 2010, and the trial version of the website was presented to the public for the first time in November.

Anyone who was interested and wanted to could become involved in the testing, both from the ranks of librarians and readers.

E-books

2010 brought new additions to the e-library.

Thanks to the generosity of the heirs of František Gel, the **Sherlock Holmes Online** project site was supplemented by modern translations of The Hound of the Baskervilles, as well as the remaining 26 cartoon stories featuring the detective Sherlock Holmes, which were published in the Čtyřlístek magazine from 1984 to 1990.

Stories Online now includes popular tales by H. C. Andersen and Broučci by Jan Karafiát. An entire new page was created for the works of Karel Hynek Mácha, who would have celebrated his 200th birthday in 2010.

Mácha Online contains Mácha's entire oeuvre (Máj, Cikáni, Večer na Bezdězu...), including extracts from his journals and less known texts (Jitro anthology), which were translated from German to Czech by Zdenka Bergrová.

All e-projects are collected at the address www.e-knihovna.cz, but e-books can also be found in the online catalogue at www.mlp.cz. We offer e-book downloads free of charge in seven different formats suitable for reading on a computer, e-book readers and smart phones.

Apart from e-books, the library has also digitalized historical documents, which are threatened by regular use and were made accessible to the public through the Kramerius system (<http://kramerius.mlp.cz/kramerius>).

E-book reader loans

The expanding offer of e-books in the library's fund has led to the introduction of a new service, namely lending **e-book readers**. Trial operation started on 14 October 2010 at the Smíchov branch, with about 20 units of 3 different types of devices. Every reader over 18 years of age who has had a library card for more than 1 year and no great violations of the library rules can borrow a reader from the library. The loan period is 14 days, which cannot be extended, and the content includes e-books from the library's production.

Films and audio books

Audio books (stories on CD in standard audio formats and MP3) are becoming increasingly popular among readers, because they can be “read” e.g. whilst driving a car, cooking or other activities that limit concentration on letters and turning pages. Audio books are also an option for people with a vision handicap. In 2010, the range of audio books was supplemented by a subsidy from the Ministry of Culture of the Czech Republic of CZK 40,000. The entire amount spent on buying new audio books was CZK 95,000. It was used to purchase files that substantially increased the selection of the spoken word, especially at smaller branches.

Apart from the spoken word, the Municipal Library of Prague offers the visually impaired assistance while reading within the **Helping You Read** program, which provides compensation aides such as camera magnifiers and web “reading” computer applications at some branches.

Equally popular among readers is the offer of **films**, which they can borrow for free for one week from the Central Library and the House of Reading. We purchase films with regard to literary inspiration and now offer them as freely available.

Return anywhere

We first offered readers the option of returning a book to a different branch than where it was borrowed in December 2009. The operation of the service in 2010 showed that it is among the most popular and its popularity continues to grow. On the other hand, it is a service that places high demands on transport and internal logistics. Numbers show that **388,650 books** went through the transport system in 2010 and the system is operational thanks to a special subsidy from the founder of the Municipal Library of Prague – the City of Prague. Therefore, we are seeking ways to make the system more effective. One possible solution is “roaming”, when the book is not returned to the branch where it was borrowed, but is left at the place where it is returned. Fiction books have been roaming in this manner since May 2010. In 2011 we are preparing the roaming of non-fiction.

When nobody needs them

One of the five rules of the library theorist S. R. Ranganatan states that **every book has a reader**. The problem is when the reader fails to appear and the array of books that has to fit onto the freely accessible shelves keeps expanding. This is why the Book Fund Department in cooperation with the Services Department has started working on a concept for developing a **low turnover fund** consisting of books that have been waiting in vain for a reader for 3 years. The result is two warehouses for less popular books – fiction at the House of Reading and non-fiction at the Školská branch.

Part time library reader

A new service is the option of **limited membership**. This type of registration is free and allows people to access only selected library services. It can be used by every reader whose standard registration period has expired, and who needs to use in particular online services (e.g. blocking, book reservation, access to online information databases or viewing the borrowing history). In the future, we would like to expand this range of services even further.

The use of the Municipal Library of Prague services is governed by the **Library Rules**, the fifth version of which was published on 12 April 2010. They are available for download in PDF format at **www.mlp.cz**, and in printed form on request at all branches.

Libraries for All

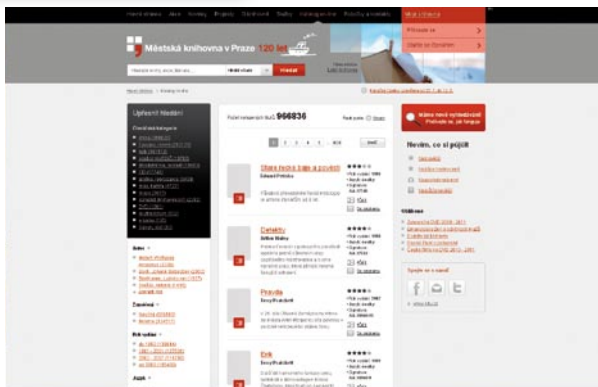
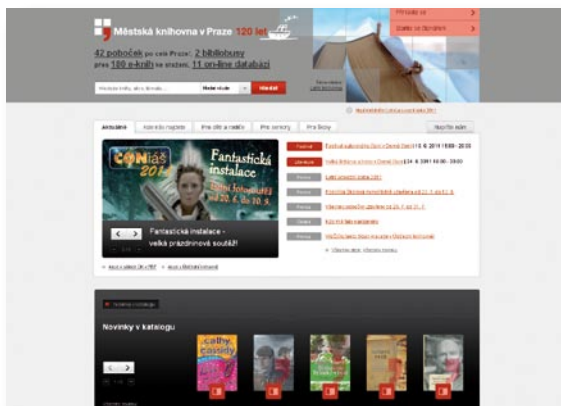
In October 2010, the international project to support multicultural education **Libraries for All**, coordinated by the Prague Multicultural Centre, was terminated. The aim of the project was to adapt library services to the needs of immigrants visiting local libraries and strengthening the role of libraries in the lives of foreigners.

Thanks to the project, **low threshold Czech lessons for foreigners** were launched in cooperation with the Centre for the Integration of Foreigners, first at the Central Library and later at the Smíchov branch. The Opatov branch offered PC courses

specially designed for foreigners, and also organized an exhibition called **My Home**. Within the project, librarians were trained on the topic of how to speak to foreigners. With regard to the considerable interest of foreigners in Czech lessons, they have been a part of the standard offer of library services.

From identification tags to FRBR

Throughout the year, the cataloguing department in cooperation with the IT department has been teaching the library catalogue not only to describe but also to group titles. Using the **FRBR** (Functional Requirements to Bibliographic Records) application, the options for searching through the fund were expanded, particularly where various editions of one work exist. The aim of FRBR is to merge all editions of the book in various language and document types into one unit (**Work**), or various editions of the book in one language and document type (**Expression**).



Opencard

According to the project website, **Opencard** is a “smart chip card that benefits both Prague citizens and visitors to the city”. It is used primarily as a transit card, but it can also be used as a membership card for the Municipal Library of Prague. Within this agenda, the second half of 2010 brought the greatest shift from paper public transit coupons to electronic ones, with a very intensive demand from the public. Hence, librarians at 14 branches, which are also Opencard contact points, answered questions and handled card applications.

For local libraries

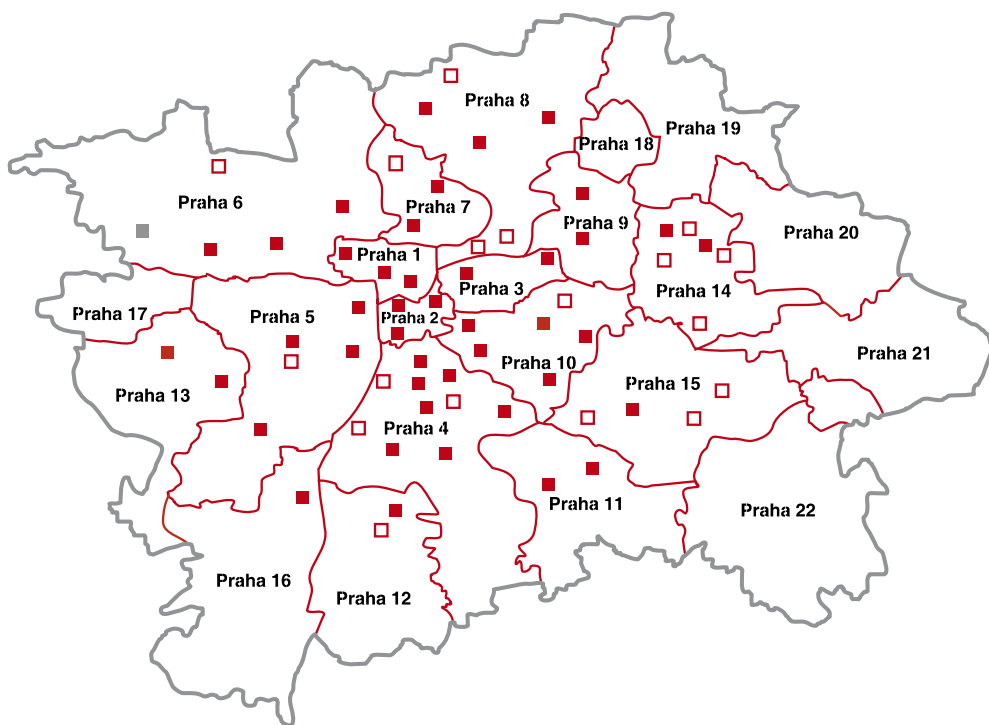
Apart from its city function, the Municipal Library of Prague also plays the role of a **regional library** for the City of Prague region. The resulting task is to ensure regional methodical and service activities for the other public libraries in Prague. This particularly involves exchange sets of books, methodical assistance during revisions and technical support when renewing and acquiring library systems and equipment. In fulfilling this task, the MLP served a total of **39 public libraries** in Prague in 2010 (21 local professional libraries, 17 with a volunteer and the Homecoming Library, a public library with a special fund focussed on hospice care and lenitive medicine).

LOCATIONS

The north brings not only cold weather to the Czech Republic, but also inspiration on how to make libraries nicer and cosier for readers. At the Municipal Library of Prague, we strive to make our libraries a **city living room** and **extended children's room**. A perfect example is the fittings of our newly reconstructed branches with colourful elements, wheelchair access, vending machines for coffee, biscuits, Kofola on tap, seating furniture and baby changing counters.

But playful elements are featured even at branches that have seen some years of operation. The Central Library and the branches in Opatov, Lužiny and Smíchov have been equipped with **game consoles** with a range of sports games. Many branches organise a **Magic Club**, where fantastic monsters on playing cards can be enjoyed, as well as reading for children, and some branches have club rooms for the smallest readers and their parents...

Branch map



State of the network in 2010

- 43 libraries (Central Library and 42 branches)
- 3 mobile libraries (until June)
- 2 newly opened reconstructed branches
 - House of reading (Prague 10), Stodůlky (Prague 13)
- 1 branch moved to new premises – Hostivař (Prague 15)
- 1 renamed branch – Jírovcovo nám. (Prague 11) to Chodov
- 1 mobile library eliminated from operation – Karosa vehicle
- 1 branch closed long-term because of building reconstruction
 - Dědina (Prague 6)

House of Reading

Address: Ruská 192/1455, Prague 10 – Vršovice

Opening hours: MON closed, TUE 9 – 19, WED 9 – 19, THU 12 – 19,
FRI 12 – 19, SAT 9 – 15

Year of first opening: 1983

Date of closure for reconstruction: 31 December 2006

Library fund size: 42,000 volumes

For lending: books, magazines, newspapers, spoken word, maps, DVDs

Other services: free internet (including WiFi), wheelchair access, drink vending machine, club room, area for young readers, baby changing counters

Number of floors: 4

- 1 Underground warehouse for less popular fiction
- 0 Book loaning and returning; daily press
- 1 Fiction
- 2 Non-fiction; Club room
- 3 Children's literature
- 4 Technical facilities

Library size after reconstruction: 1200 m²

Number of librarians: 12

Date of opening to the public: 22 November 2010 at 14:00

Architectural design: ATREA, Ing. arch. Jan Janoušek,
Ing. arch. Zuzana Jurkovičová

Construction: Vltavín Holding, stavební podnik s.r.o.

Interior design: INTEBO, Josef Šebek

Investor: Municipal Library of Prague, allowance organisation of the City of Prague

Building investment costs: CZK 89 mil.

Interior costs: CZK 3,600,000

Hostivař

Address: Golfová 910, Prague 15

Opening hours: MON closed, TUE 9 – 19, WED and THU 12 – 19,
FRI 9 – 15

Year of first opening: 1910

Date of closure for reconstruction: 17 May 2010

Library fund size: about 15,500 volumes

For lending: books, maps, magazines, newspapers, spoken word

Other services: internet, WiFi, wheelchair access, baby changing counter

Library size after reconstruction: 312 m²

Number of librarians: 2

Date of opening to the public: 1. 6. 2010

Architectural design: Ateliér Biblio, Ing. arch. Kateřina Hořavová

Interior design: INTEBO, Josef Šebek

Investor: Prague 15 Municipal Office (Building), Municipal Library of Prague (interior)

Interior costs: CZK 735,000

Stodůlky

Address: Kovářova 4/1615, Prague 13, KD Mlejn

Opening hours: MON closed, TUE 9 – 19, WED and THU 12 – 19,
FRI 9 – 15

Year of first opening: 1988

Date of closure for reconstruction: 31 December 2008

Library fund size: about 26,000 volumes

For lending: books, maps, magazines, newspapers, spoken word

Other services: internet, WiFi, wheelchair access, baby changing
counter

Library size after reconstruction: 360 m²

Number of librarians: 3

Date of opening to the public: 23 November 2010

Architectural design: Ing. Josef Mareš, Ing. arch. Hynek Novák

Construction: Vltavín Holding, stavební podnik s.r.o.

Interior design: TECHO a.s.

Investor: Prague 13 city section (KD Mlejn building), MLP (interior)

Interior costs: CZK 1,400,000



EVENTS

As part of its services for the public, the Municipal Library of Prague is more than “just a library” that lends books and provides information. Last year, the library organised **5,785** cultural and educational events, which were visited by **149,000 people**.

The events are of various types, focus and size and everybody can choose. The premises of the Municipal Library of Prague offer professional cultural and educational experiences through film screenings, concerts, lectures and meetings, which are organised by the MLP Cultural and Educational Centre (Popular University), or in cooperation with other entities. Events at the branches are organised with regard to the size, focus and place where the library operates.

The most popular by far are programs for schools and leisure activities for children. The foyer of the Opatov branch serves as an official exhibition area. Another interesting feature is the occasional amateur theatre ensemble composed of library employees called **Vý; (Výstředník)**, which appears on the “scene” occasionally as part of the MLP program at the Book World trade fair and Prague Museum Night.

Selection of interesting events in 2010

CONiáš : on dragon's wings / Prague museum night: creative arts at the library / Bambiriáda: showcase of organisations devoted to children / Book world: story library bus / Prague celebrations: flights to outer space / Poetry days / **Library Games** / Writer's desks / PC club not only for seniors / **The World of Astrid Lindgren through the eyes of Ilon Wikland** / Aerofilms presents / Drak Theatre from Hradec Králové / Georgia Festival in Prague / Festival of the North / Hradištan / Rudy Linka Trio / Máchovské nokturno / International Outdoor Film Festival / Mene Tekel / One World 2010 / Write, Kafka, Write / **Screenings and Dialogues** / Project 100 / **Karel Škréta**: Works and Times

Visitors to the library who chatted with readers

Irena Dousková, Jiřina Šiklová, **Jaroslav Rudiš**, Petr Nikl, Martina Drijverová, Lucie Lukačovičová, **Pavel Renčín**, Jan Cimický, Iva Procházková, **Alena Ježková**, Marka Míková, Dagmar Kludská, Petra Braunová, Ivan Hlas, Zdeněk Mahler, **Michal Viewegh**, **Ludvík Vaculík**, Jon Davis, Petr Borkovec, J. H. Krchovský, dánský velvyslanec Emil Ole Moesby, Věra Wajsarová, **Tomáš Halík**, Vlastimil Vondruška, **Tomáš Sedláček**, Pavel Kosatík...

Books presented to the public

Mojmír: The Road of the Czech King by Renata Štulcová and Renáta Fučíkova (Albatros, 2010)

Fragments of Greenland Culture by Ole G. Jensen, translated by Zdeněk Lyčka (Triton, 2010)

Digitalization or No More Dogears

An international conference called **Digitization or No More Dogears**, focussed on digitalising printed documents, concluded the **HISPRA** project. Speakers from the Czech Republic, Norway, Slovakia and Slovenia presented their experiences in making digitalised documents accessible to the general public to a professional and laic audience. The conference was concluded with a debate on the topic of paper books versus e-books, the result of which was indecisive.



The library and its readers/Readers and their library

A total of **179,178** registered users used one of the addressed library services. There were 25,879 readers aged under 15. The average age of a registered active MLP user is **34.4 years** (11.3 for child readers; 38.3 for adult readers). More female than male readers are registered at the library, the ratio is about 66:34, the ratio between female and male readers up to 15 years of age is more balanced – 53:47.

As in 2009, we determined through various surveys how we are perceived by the general public. One of the surveys focussed on visitors to events held on Central Library premises, the second on book reading in Prague.

Survey among visitors to the premises

The aim of the survey was to determine the ratio of readers: non-readers (who do not have a library card) among visitors to the cultural and educational events held on the premises of the **Central Library** at Mariánské náměstí. The survey was carried out using poll tickets in April 2010. A total of 4,500 tickets were collected, which is an 85% return rate with regard to the number of visitors on the premises during the survey. **The total ratio of non-readers / readers in percent was 62:38.**

Survey of Prague readership

The readership survey among Prague citizens was conducted as part of a national representative survey on the topic of **reading and readership**, conducted by the DEMA agency for the National Library of the Czech Republic and the Institute for Czech Literature of the Academy of Science of the Czech Republic. Data was collected through questionnaires during June and July. The size of the Prague sample was 600 respondents. The analysis of the results of the Prague section of the survey was conducted for the library by Sociores.

The Prague range of questions was adapted to the data required for the Prague – City of Literature project, which should be conducted in 2011. Apart from reading and book purchases, the questions also focussed on the position of the library and other cultural facilities and institutions in the eyes of Prague citizens.

Key research findings in points

- 50% of Prague citizens pick up a book at least once a week,
- The average number of books read per year is 19,
- 17% of Prague citizens do not read books at all, 50% one per month and 33% more than one per month
- Those who don't read most often mentioned the following reasons for not reading: I don't have time, I don't enjoy it, **I find everything I need to know elsewhere**; reading is too strenuous,
- The most popular reading is easy fiction,
- 70% of Prague readers preferred printed books in 2010, e-books were preferred by 15%
- The number of books in a Prague household library is 262 volumes,
- Reading books competes successfully against other leisure activities (television, internet, audio, film)
- The most common reason why people do not go to the library – I don't have time; I prefer to buy books; I would be confused there; the opening hours are not good and **none of my peers go there**,
- 57% of people would start borrowing books from a library if they could order them home via a courier service
- 92% of Prague citizens have heard of the Municipal Library of Prague.

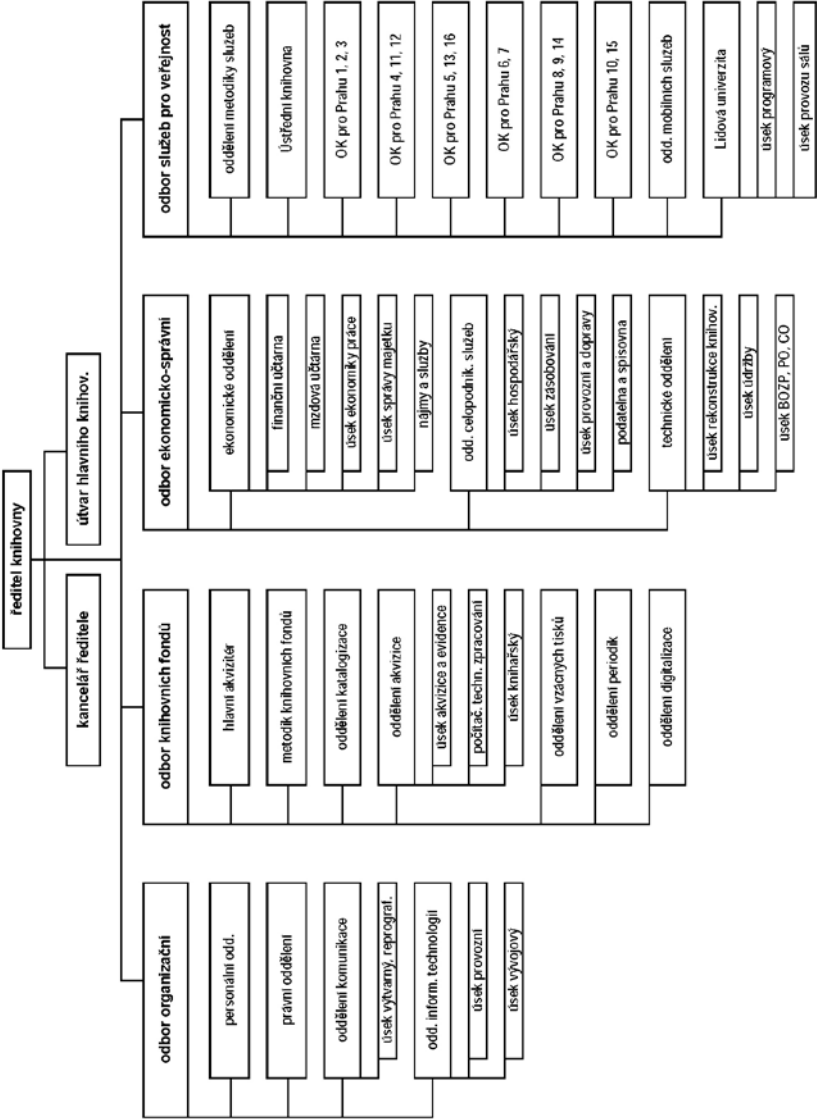
The library and its employees

The full-time equivalent of employees in 2010 was 455, with a total of **504 people** working at the libraries; 390 women (77%) and 114 men (23 %). A total of 151 educational events were organised, to improve qualifications and expertise not only among MLP employees but also among regional library workers. In planning the educational events, special attention was paid particularly to the topics of literature, new technologies, library trends and internal system training.

Two librarians from the Municipal Library of Prague were awarded for their long-term work. The main library acquisitioner **Zdena Prahlová** was awarded the **Z. V. Tobolka medal**, which is presented by the Union of Librarians and Information Employees for contributions to the Czech library industry.

Zora Zavadilová, former head of the Opatov branch, received the **Prague 11 City Section award**.

MLP organization structure



FINANCES

The Municipal Library of Prague is an allowance organisation of the City of Prague. In 2010, the founder approved a non-investment contribution of CZK 213,800,000, which was adjusted on 31 December 2010 to CZK 230,080,300. Other sources of financing for the Municipal Library of Prague are **specialised subsidies from the City of Prague budget** (HISPRA, “Return anywhere” service, purchase of the book fund, partial coverage of costs for modernising the House of Reading, Stodůlky, Hostivař, Lužiny and Dědina branches and the Prague – City of Literature project), **financial mechanisms of the EEC and Norway** (HISPRA – Rescue of historical Prague works and other rare documents from the MLP fund), a **subsidy from the state budget**: grant projects within the VISK 2 program (improving the qualifications of librarians and information employees), 21st Century Library (protection of rare prints, Playing with the library) and other programs (K. H. Mácha, memory training and brain jogging courses, spoken word exchange fund for the blind and visually impaired). The **Prague city sections** also contribute to the operation of some branches i.e. Prague 1 city section (Hradčany branch), Prague 5 city section (Ostrovského branch), Prague 6 city section (Dejvice branch) and Prague – Velká Chuchle city section (Velká Chuchle branch).

The costs of the Municipal Library of Prague were covered from the following sources in 2010:

Non-investment contribution from Prague City Hall	88.77%
Non-investment contribution from the Prague city section	0.54%
State subsidies	0.11%
EU subsidies	0.45%
Own resources (revenues, donations, funds)	10.13%

Core activities

Revenues:

From library activities	CZK 21,118,000
From other activities – private events	CZK 2,104,000
Other revenues	CZK 2,761,000
Total	CZK 25,983,000

Costs

Consumables	CZK 37, 313,300
Services	CZK 45 687,000
Personnel costs	CZK 162 186,700
Taxes and levies	CZK 172,100
Other costs	CZK 1 374,600
Depreciation	CZK 9 756,000
Total	CZK 256 489,700

Capital expenditure

A capital expenditure of CZK 53,050,000 was approved in 2010 and adjusted during the year to CZK 64,930,000. All the funds were used for reconstructing and modernising the Ruská library (House of Reading). The savings in capital expenditure were due to lower costs of interior fittings, some expected items of an investment nature did not reach the purchase price for FTA and were therefore financed from the non-investment contribution of the MLP. Savings on capital expenditure of CZK 1,220,000 were returned to the MLP founder.

Investment fund

With consent from the founder, the investment fund was used for the following projects:

Project name:	Costs:
Reconstruction and modernisation of the Ruská library	CZK14,131,100
Acquisition of the new MLP website	CZK 718,500
Modernisation of the Colosseum reservation system	CZK 115,200
Strengthening the data network on the premises	CZK 91,400
Acquisition of AC units for rare book workplaces	CZK 54,800
Data and branch servers	CZK 731,000
IT purchases – removal from IF	CZK 1,700,000
Licence for MS Office and MS Windows upgrade	CZK 400,000
Bibliobox	CZK 180,000
Bookshelves	CZK 50,600

activities

(lease of non-residential premises)

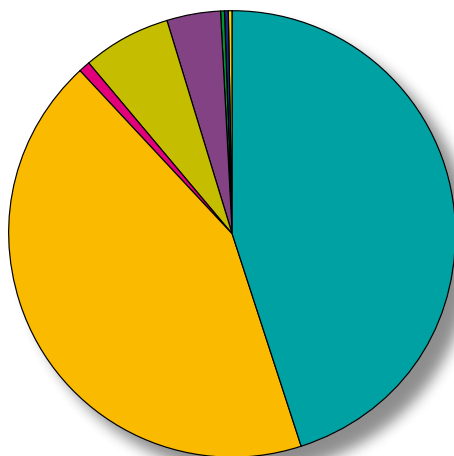
<u>Revenues</u>	<u>CZK 1,642,000</u>
<u>Costs</u>	<u>CZK 1,292,000</u>
<u>Profit/loss before tax</u>	<u>CZK 351,000</u>

FIGURES

43	MLP branches where services are provided; the largest and busiest library is the Central Library at Mariánské nám.
28	branches with wheelchair access (26 branches + 2 library buses)
455	systemised employment relations of the MLP; in total it employs 504 people
2,334,726	books, maps, CDs, DVDs, images, notes, tapes and electronic documents in the MLP fund
112,746	documents added to the MLP fund in 2010
16	million CZK is the amount spent by the MLP in 2010 to purchase new documents
11	specialised databases available online via
29	volumes were restored in the restoration workshop, including a rare volume of the Steier hymnbook of 1697
6,877,235	books (CDs, DVDs, maps, images...) borrowed for home by readers in 2010 from the MLP
20,335	books, magazines and other documents taken during one day of library operation
6,875,286	total number of all loans (home lending to readers, extension of these loans, registered loans on library premises, loans provided to regional libraries established by Prague city sections); this number does not include unregistered loans from the free selection (i.e. the number of books, newspapers and magazines that readers and unregistered visitors read on library premises)
179,178	people had a valid library card in 2010 and used library services at least once
32,651	people had a valid library card in 2010, but did not use any of the library's services
36,440	people procured a library card in 2010
2,226,110	people visited one of the MLP branches for library and information services
5,931,732	people visited the library via the internet

5,785	cultural or educational events were held on the premises of the Central Library and MLP branches with the care of librarians and Popular University program employees
149,108	people attended these events
151	educational events were held for MLP employees and regional library employees
39	Prague public libraries serviced by the MLP within its regional functions
4	websites bearing the MLP logo (www.mlp.cz , www.k4u.cz , www.e-knihovna.cz , www.prahavknihovne.cz)
5	profile pages on the MLP Facebook page (Municipal Library of Prague, Culture at the Library, CONiáš, House of Reading, K4U)
1	official e-mail address for communication with readers knihovna@mlp.cz

Structure of the MLP library fund



1,046,007	Fiction	45.20 %
991,995	Educational	42.87 %
20,384	Cartographic	0.88 %
152,337	Music	6.58 %
90,046	Audio	3.89 %
1,345	Audiovisual	0.06 %
10,522	Graphic	0.45 %
1,578	Electronic	0.07 %

Thank you

ADC Blackfire Entertainment, Adjust Art Pro, Ampaco, Czech Film Club Association, British Council, Bobed service s.r.o., Cambridge University Press, Centre for the Integration of Foreigners, Czech Centres, Czech Children and Adolescents Council, People in Need, DYTEC, E-scan, Egmont, FAMU, Ing. Bláha, Insider Media, Josef Šebek – INTEBO, K. Semelka, LSE Integration, Metropolis, Prague Multicultural Centre, MUDr. Igor Kronnyj, Music Art Prague, Nadace VIA, editors and publishers, National Gallery of the Czech Republic, Prague Celebrations, Pedagogical Museum of J. A. Komenský, Pevnost, Pražská plynárenská, a. s., Regina, ROPID, Scena.cz, Litera Association, Union Organisation of the Blind and Visually Impaired, Spektra, Společnost bratří Čapků, Poezie Association, Straky na vrbě, Svět knihy, Taktika Muzika, Topzine, 3M, Embassy of the Danish Republic, Vltavín s.r.o., elementary and secondary schools

Foreign partners of the Municipal Library of Prague

Maribor Library (Slovenia), Vienna City Library (Austria), Helsinki City Library (Finland), Central Universal Educational Library N. A. Někrasova in Moscow (Russia), Queens Library (New York, USA)

Participation in international projects

Libraries for All

Memberships

Association of Library and Information Professionals of the Czech Republic, Czech Library Union, Klubko – Children's Library Club, International Federation of Library Associations and Institutions – Metropolitan Libraries Section, International Association of Music Libraries, SIBMAS – International Association of Libraries and Museums of the Performing Arts

120th anniversary of the library

The numbers are simple. When we subtract 1891 from 2011, we get **120**, and that is the number of years since the foundation of the Municipal Library of Prague. We are celebrating this anniversary with special graphics by **Václav Šlajch**, contests, fragments of library history, an exhibition about the Municipal Library of Prague at the Smečky Gallery and publication of a representative book called The Story of the Prague Bible. The last two activities were in cooperation with Pražská plynárenská, a.s.

Online services

The launch of the new website is not the end, but the beginning. The plan in this direction mainly involves changes in operation immediately after the launch, as well as further development. A version for smart phones will be designed, as well as a virtual account not linked to a reader account.

E-library

E-books published by the MLP get a cover and all the publication requirements, as well as an entry in the catalogue. A new website will be created – a sitemap that will help the reader around electronic documents in the library fund. Books that appear on the list of recommended school literature will get their own page. This should not just be a sitemap, but a section of “books not just for school” with added informational value.

Books move for readers

“Please, when can you bring the book from the Central Library to Kobylisy? It’s the closest branch to me.” These requests started appearing shortly after we introduced the option of returning books not only at the branch where they were borrowed. The service of transporting books between branches as requested by readers is being prepared, and should be launched in autumn 2011, as well as other alterations to existing services such as blocking, reservations and orders.

Modernisation of the Školská and Břevnov branches

Školská (Prague 1) and **Břevnov** (Prague 6) were among the first branches of the MLP to undergo automation (transition from stamps to computers) and partial reconstruction. However, this was in the 1990s. After decades of operation, it is time to take another look at the premises and services and modify them in cooperation with architects, librarians and readers so that they meet current needs.

Prague – City of literature

The literary history of Prague, current literary events, mingling of influences, cultures, languages, a city of inspiration, a city of options, these are all the ingredients Prague has that have inspired the representatives of professional organisations in the field of books and literature to prepare the **Prague – City of Literature** project. In 2011, a number of accompanying activities will be held within the project, including an application for the title of UNESCO Creative city of Literature. The project has the support of the Prague City Council and the Municipal Library of Prague has been appointed as coordinator.

Digitalised cinema

Film screenings are still a part of the library's offer of culture and are very popular among viewers. Apart from the Film Club, films are also shown within thematic cycles (Projection and dialogues with FAMU, AČFK presents, Project 100) or festival features (One World). Transition from classic projection equipment (35 mm and DVD projection) to digital technology will improve the quality of the screened films and expand the program offer.

Dědina branch

The citizens of Dědina (Prague 6) are still waiting for the opening of the library in the reconstructed premises. If all goes well, the branch should be opened in the second half of the year.

